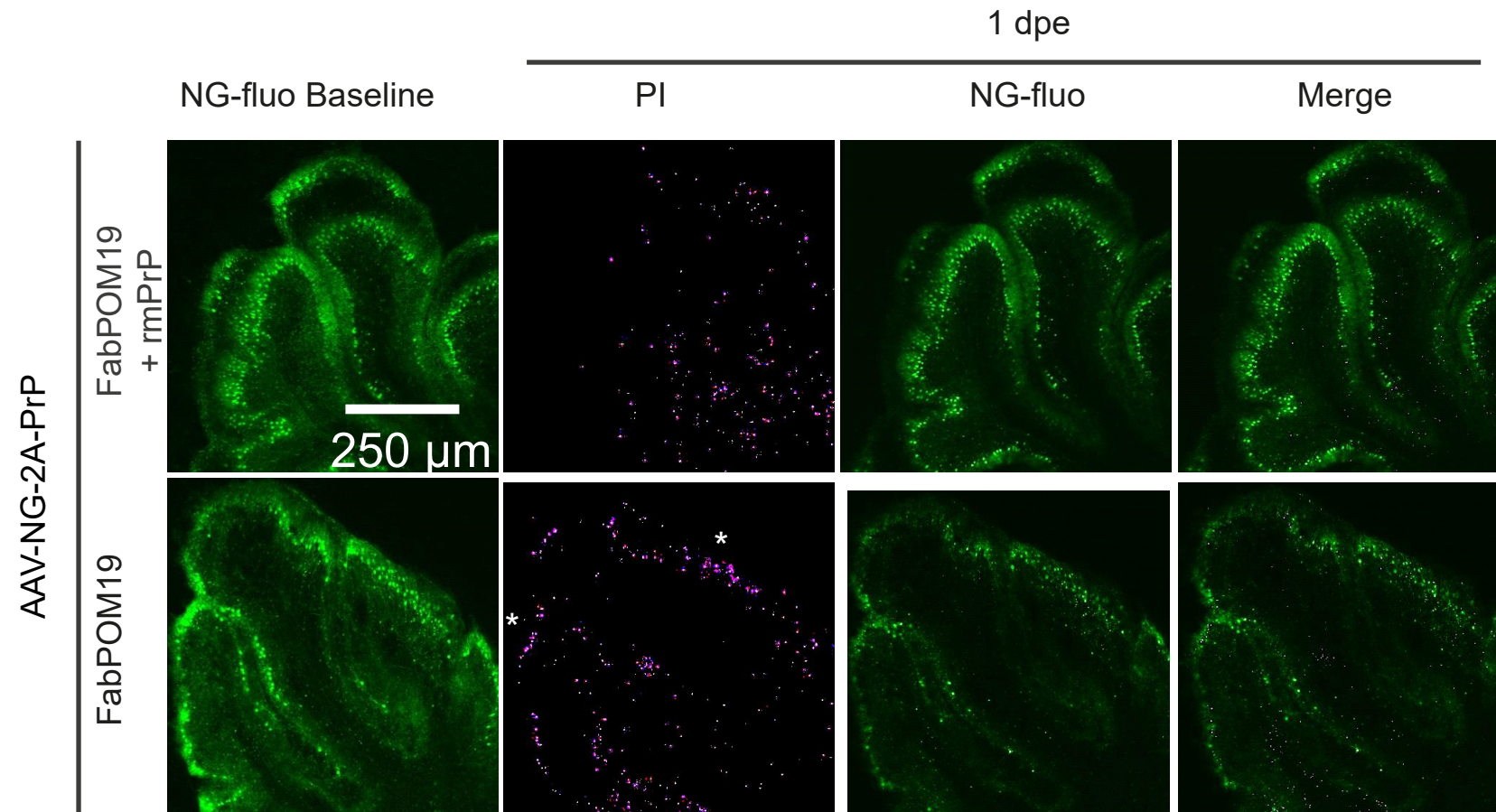
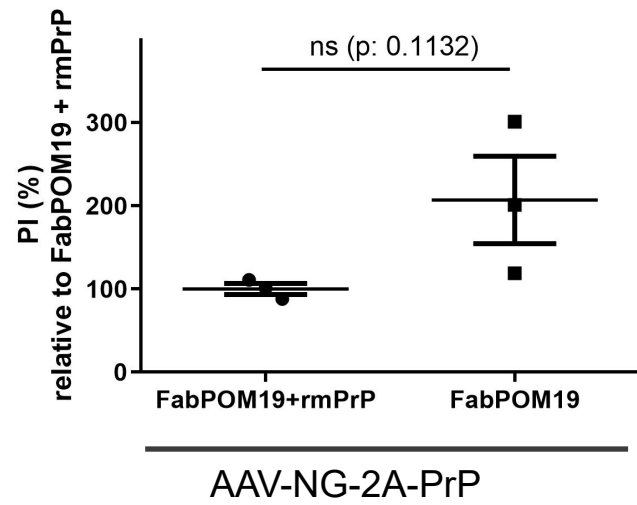


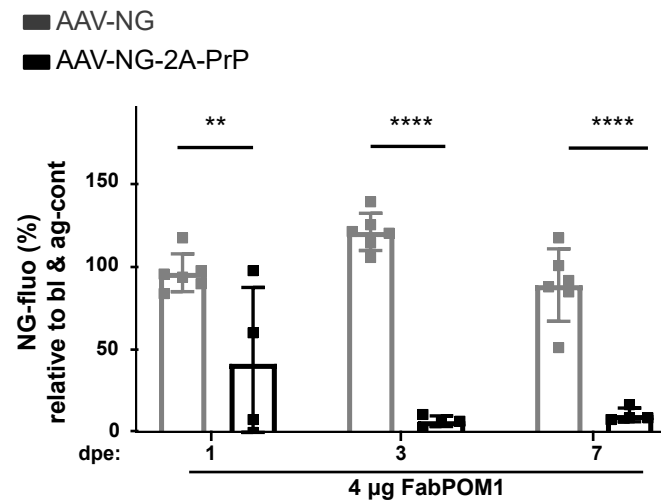
A

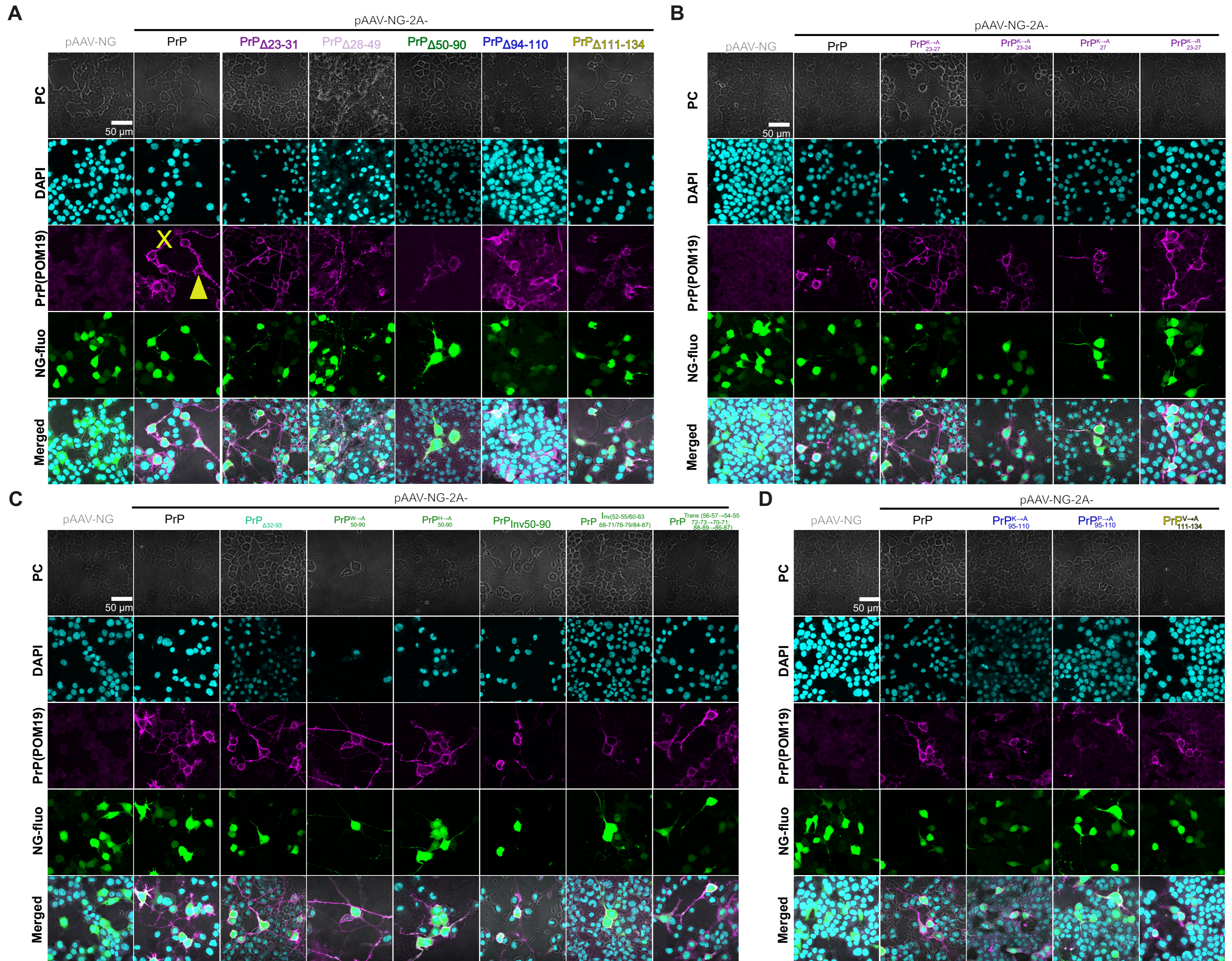


B



C



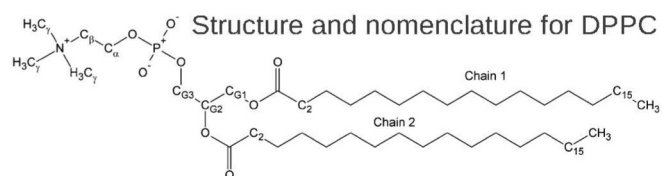


A

Peptides	Simulation Time (ns)	lateral tension (mN/m)	Number of DPPC per layer
1. prion 60-83 (3-octapeptide)	389/410	0	128
2. prion 23-90	250	0	128
3. prion 60-83	390	0	64
4. prion 60-83 with Trp->Ala mutations	170/170	0	64

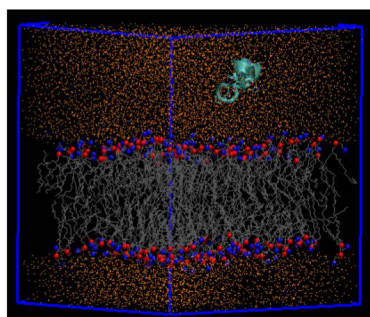
prion 60-83 (3-octapeptide):

HGGGWGQP-HGGSWGQP-HGGSWGQP



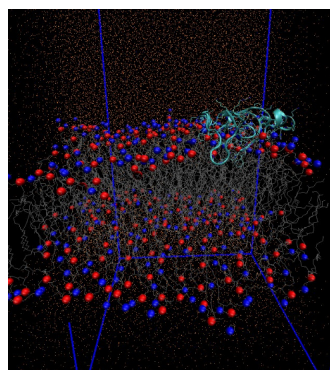
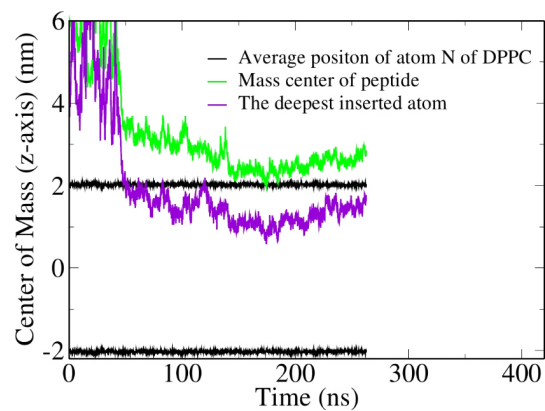
JPCB 2008, 5924

MD simulation system



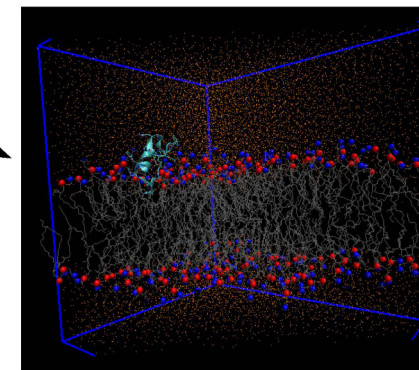
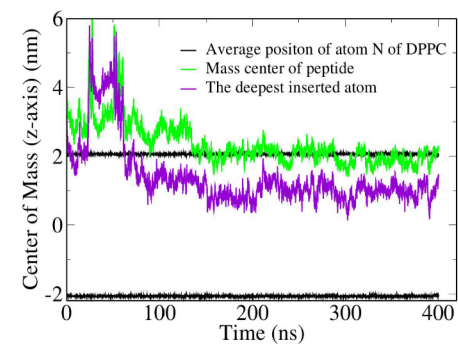
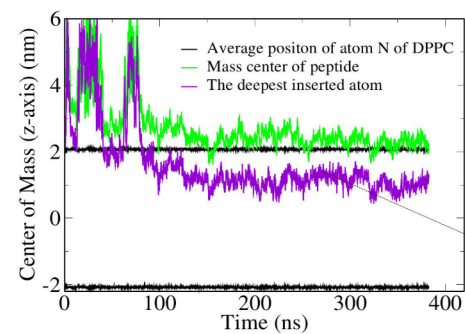
C

PrP 23-90

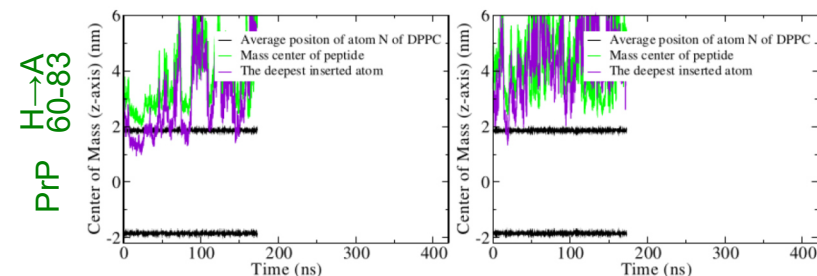
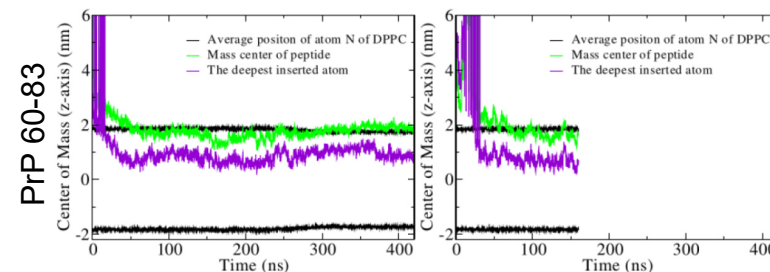


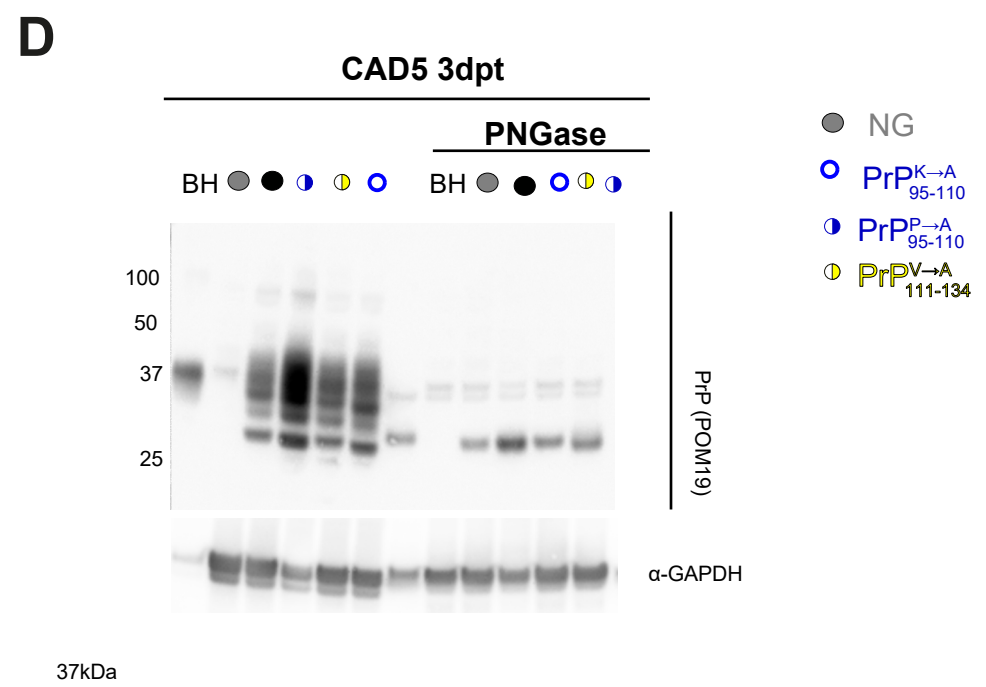
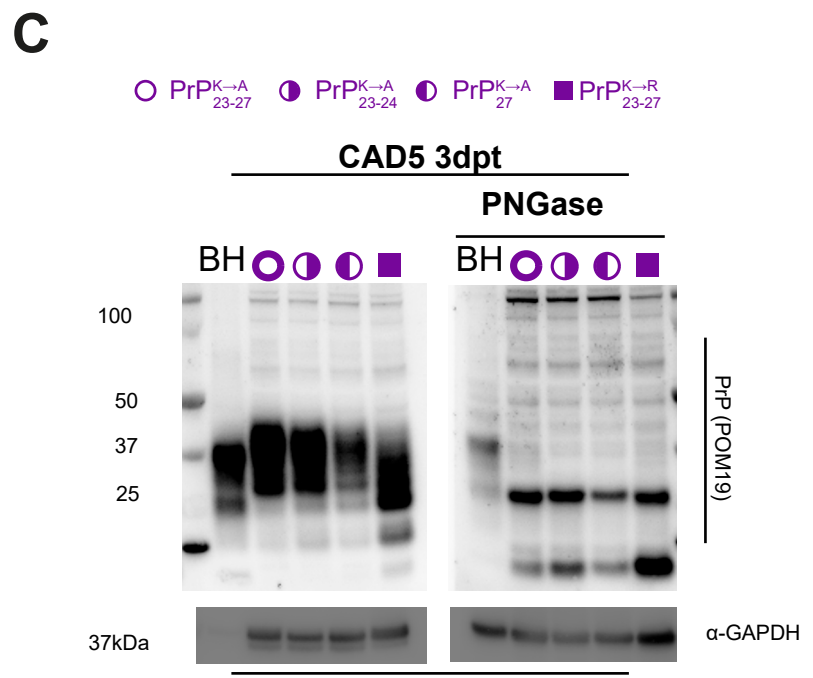
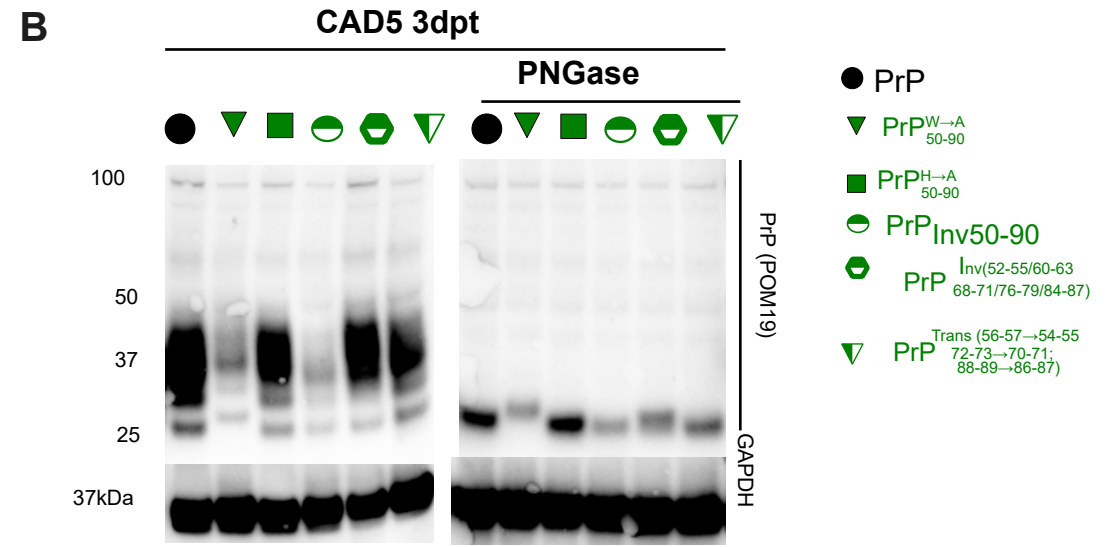
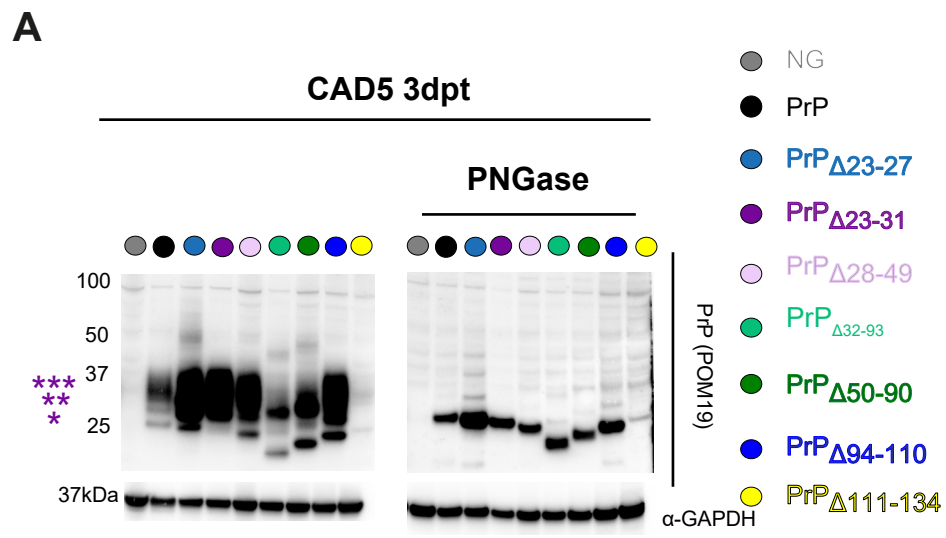
B

PrP 60-83

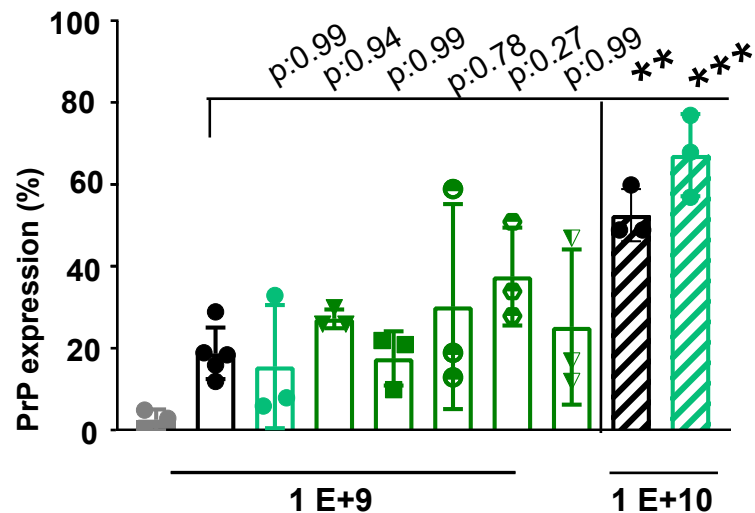


D





- A**
- AAV-NG
 - AAV-NG-2A-PrP
 - AAV-NG-2A-PrP Δ_{32-93}
 - ▼ AAV-NG-2A-PrP $\begin{matrix} W \rightarrow A \\ 50-90 \end{matrix}$
 - AAV-NG-2A-PrP $\begin{matrix} H \rightarrow A \\ 50-90 \end{matrix}$
 - AAV-NG-2A-PrP $_{Inv50-90}$
 - AAV-NG-2A-PrP $\begin{matrix} Inv(52-55/60-63 \\ 68-71/76-79/84-87) \end{matrix}$
 - ▼ AAV-NG-2A-PrP $\begin{matrix} Trans(56-57 \rightarrow 54-55 \\ 72-73 \rightarrow 70-71; \\ 88-89 \rightarrow 86-87) \end{matrix}$



- B**
- AAV-NG
 - AAV-NG-2A-PrP
 - AAV-NG-2A-PrP Δ_{23-31}
 - AAV-NG-2A-PrP Δ_{28-49}
 - AAV-NG-2A-PrP Δ_{50-90}
 - AAV-NG-2A-PrP Δ_{94-110}
 - AAV-NG-2A-PrP $\Delta_{111-134}$

